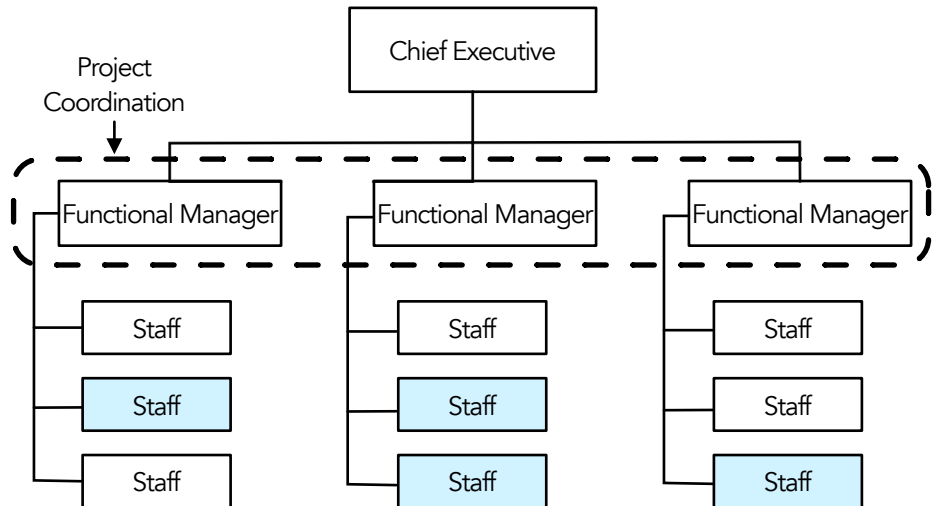


# Company Organization ①

## FUNCTIONAL



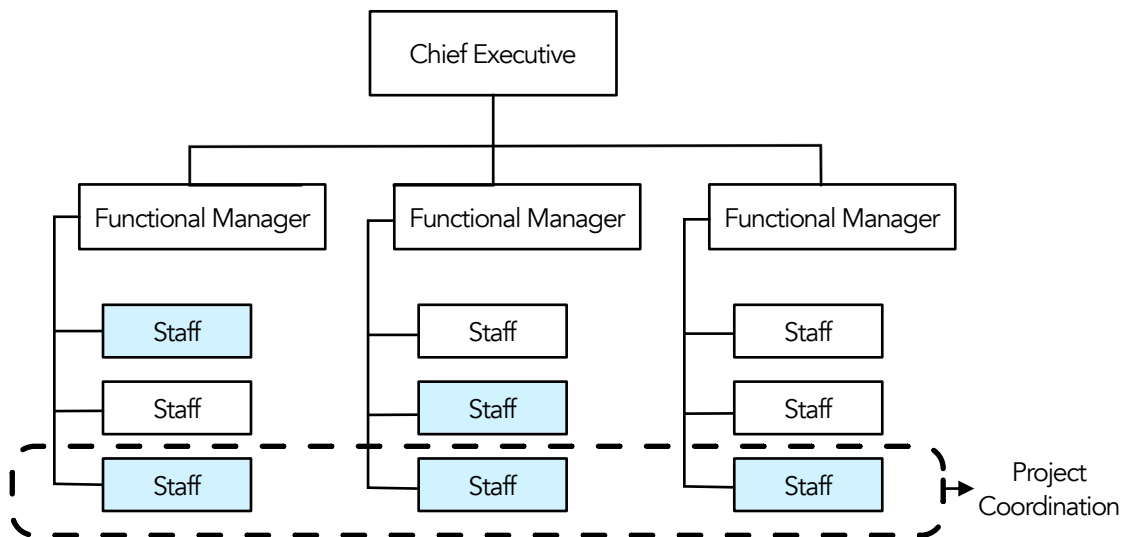
### Functional Organization

- Small organizations with limited resources.
- Simple projects.
- Small projects
- Projects that are very similar to previous projects.
- Low cost/low risk.

#### Examples

- Software Updates
- Concept Studies
- Project Definition Studies

## WEAK MATRIX



### Weak Matrix Organization

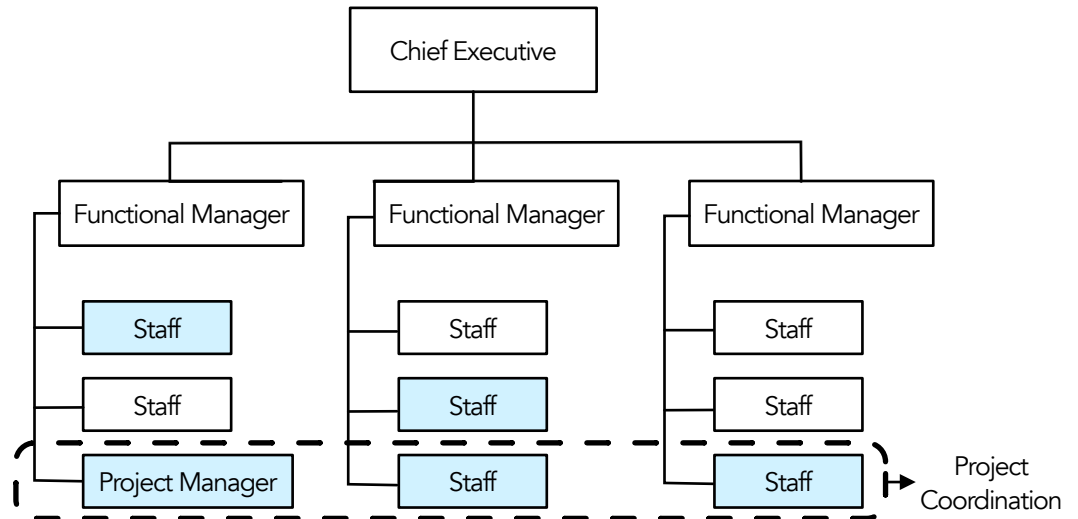
- Small projects of limited duration.
- Relatively simple scopes.
- Projects with limited changes relative to previous projects.
- Projects of limited significance.
- Low risk, low cost.
- Low to moderate schedule pressure.

#### Examples

- Maintenance Projects.
- Task force to develop recommendations.
- Concept Selection Study.
- Technology Strategy Development.

## Company Organization (2)

### BALANCED MATRIX



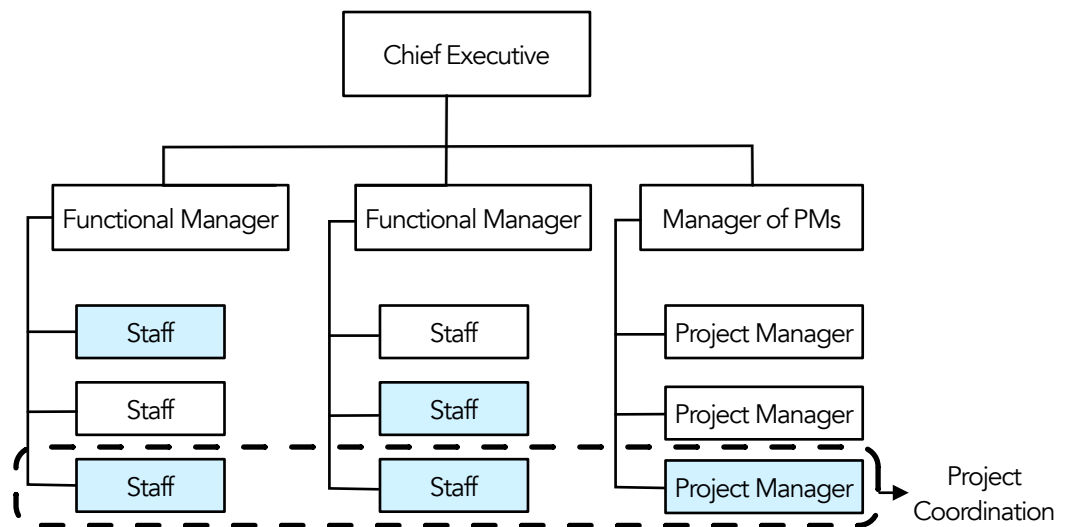
#### Balanced Matrix Organization

- Projects with a moderate scope and duration.
- Projects that are not too complex and the organization has experience with.
- Moderate cost, risk and limited schedule pressure.

#### Examples

- Relocation Operations
- Cross functional Reorganization Projects.

### STRONG MATRIX



#### Strong Matrix Organization

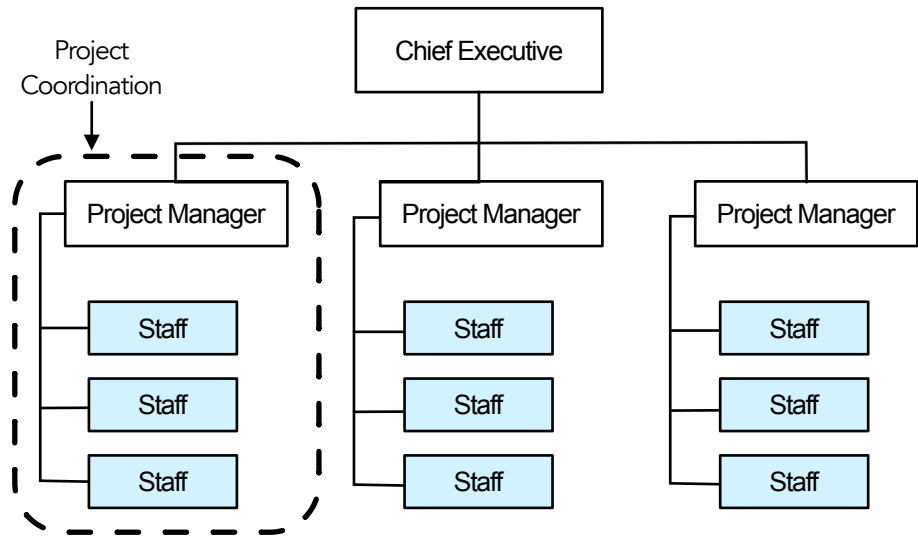
- Medium to Large Projects where resource efficiency is important.
- Non-schedule driven projects.
- Moderate duration projects.
- Unique projects with limited challenges.
- Projects where functional input is important.
- Managed risk projects.

#### Examples

- Feasibility Studies for large projects.
- Design Projects for construction projects.
- New software development.
- Plant Turnarounds.

# Company Organization ③

## PROJECT ORIENTED



### Project Oriented Organization

- Large Projects in large organizations.
- High risk ventures.
- Complex projects requiring a lot of coordination.
- Projects in a Project focused organization.
- Projects which will have a major impact on the organization.
- Challenging Projects.
- Schedule driven Projects.

#### Examples

- Large Scale Public Works
- NASA Space Station
- Grass Roots Refinery Design and Construction.
- Major offshore developments.

	<b>Functional</b>	<b>Weak Matrix</b>	<b>Balanced Matrix</b>	<b>Strong Matrix</b>	<b>Project Oriented</b>
<b>Scope</b>	Small	Small	Medium	Medium	Large
<b>Duration</b>	Short (<1 year)	Short	Medium	Medium	Long
<b>Uniqueness</b>	Similar-normal business	Small changes	Neutral	Unique	One of a kind
<b>Complexity</b>	Simple	Simple with some coordination	Medium	Medium - High	High
<b>Ambitiousness</b>	Easy Success		Achievable		Challenging
<b>Significance</b>	Low Priority	Low to Moderate	Moderate	Important	Key
<b>Risk</b>	Small		Moderate		High
<b>Cost</b>	Low or no budget	Low budget	Moderate	Medium - High	High
<b>Simultaneity</b>	Many		Few		Very Few